



## INDEX

JUNO Paints and the environment.....	3
What is an EPD? .....	4
Why is an EPD required?.....	4
What is LCA? (Life Cycle Assessment).....	5
Why certify products through EPD? .....	7
Prescribe JUNO:	
-Enamels.....	8
-Varnishes .....	9

## JUNO PAINTS AND THE ENVIRONMENT

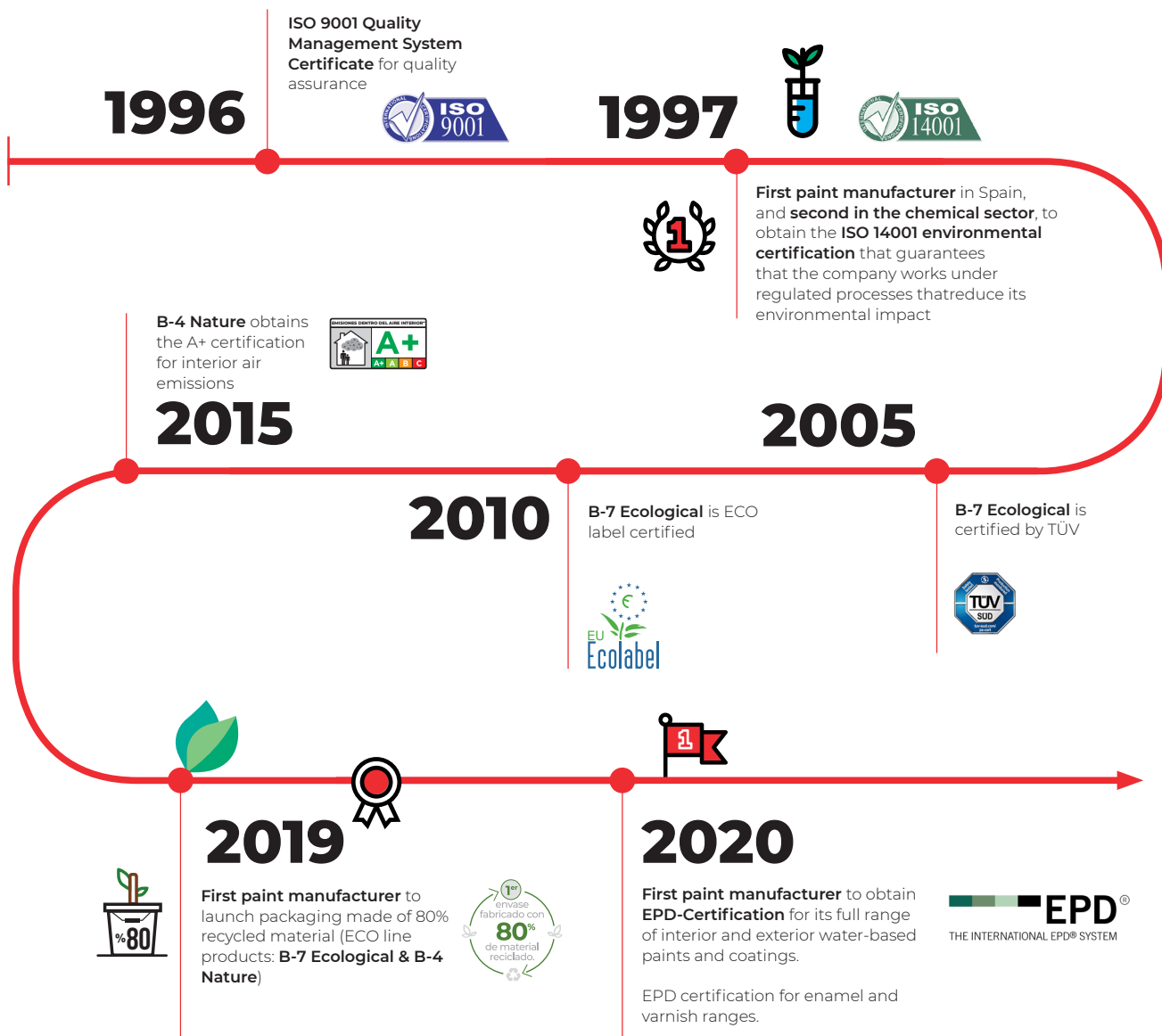
The initiative to obtain the **EPD certificate** is part of the proven environmental commitment of **JUNO Paints**. The company has a long standing history in which, beyond strict compliance with national and international regulations for the paint sector, there is a special interest in safeguarding our environment.

In this way, JUNO certifies its products through reference laboratories in its sector, such as the German TÜV. In Spain, the firm has been a pioneer in obtaining environmental certifications or the design, development, production, marketing and

after-sales service of paints, enamels, colorants, varnishes and thinners.

JUNO has the environmental management certification according to the **ISO 14001** standard and with which it also accredits the Quality Management System in accordance with the **ISO 9001 standard** since 1996. Subsequently the B-7 Ecological paint was awarded the highest European ecological product certification..

In 2020 JUNO also obtained the EPD certification for its enamel and varnish ranges.



## WHAT IS EPD?

**EPD (Environmental Product Declaration)** is a method of quantifying the environmental impact of the manufacturing processes of products, based on their **LCA (Life Cycle Analysis)**, and requires the verification of a recognized third party.



The main attributes of a **EPD** are the following:

- **Objective:** through the use of scientifically accepted and valid methods based on international standards for the assessment of LCA (Life Cycle Analysis).
- **Verifiable:** the information for the EPD is collected and calculated based on accepted and harmonized calculation rules.
- **Accurate:** the information must be continuously updated, thanks to the routines established in the company for documentation and follow-up procedures.
- **Credible:** periodic review, approval and monitoring actions are carried out by an independent and recognized verifier.



Pictogram that makes it possible to identify products in the marketplace that have LCA results that have been verified by a recognized third party.

## WHY IS AN EPD REQUIRED?

The **EPD** are intended to provide information for decision making in projects and execution of works.

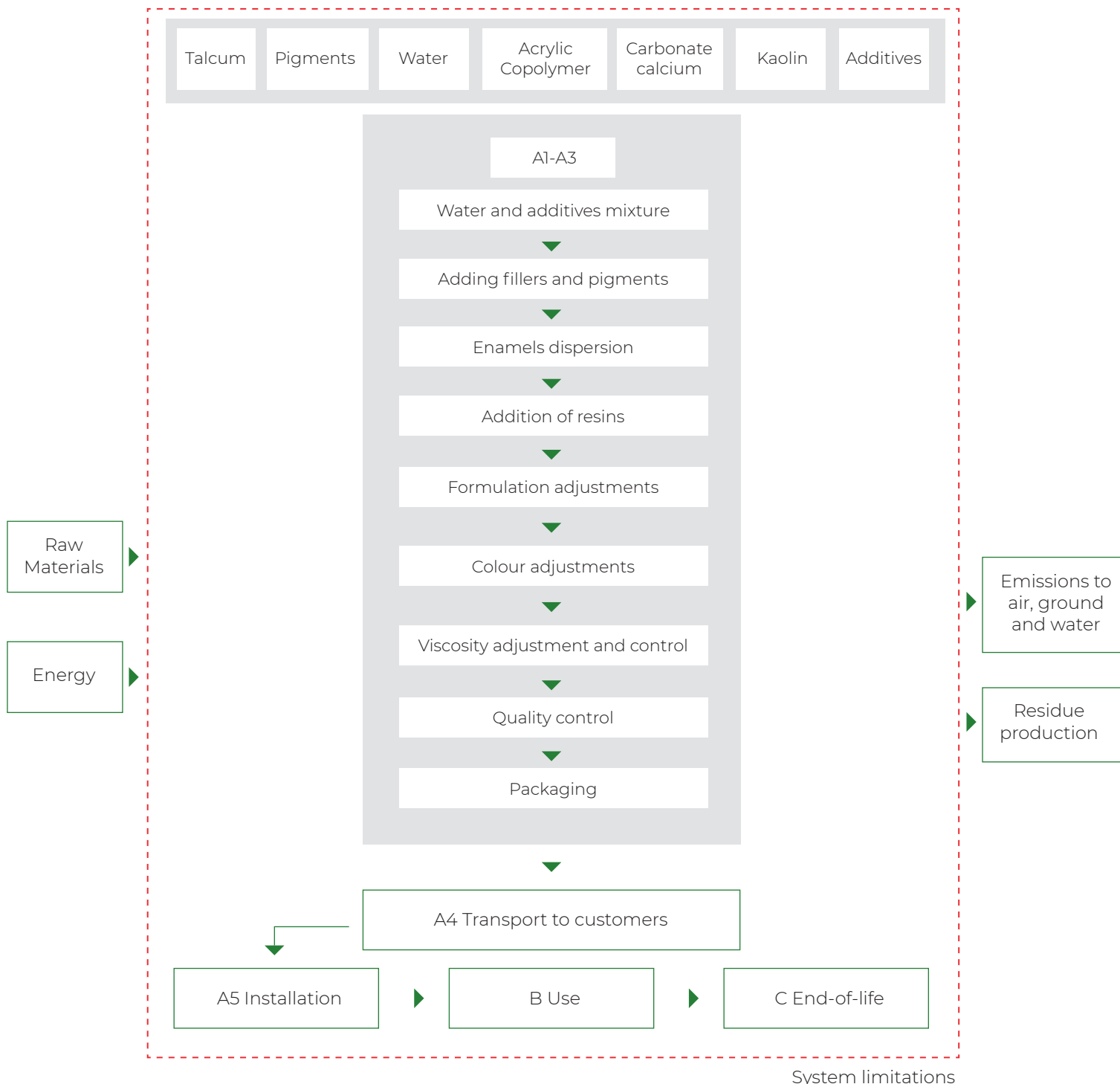
It is about analyzing the life cycle of a material to know the environmental impacts that it entails and offering this information to make decisions focused on a sustainable building.

## WHAT IS LCA?

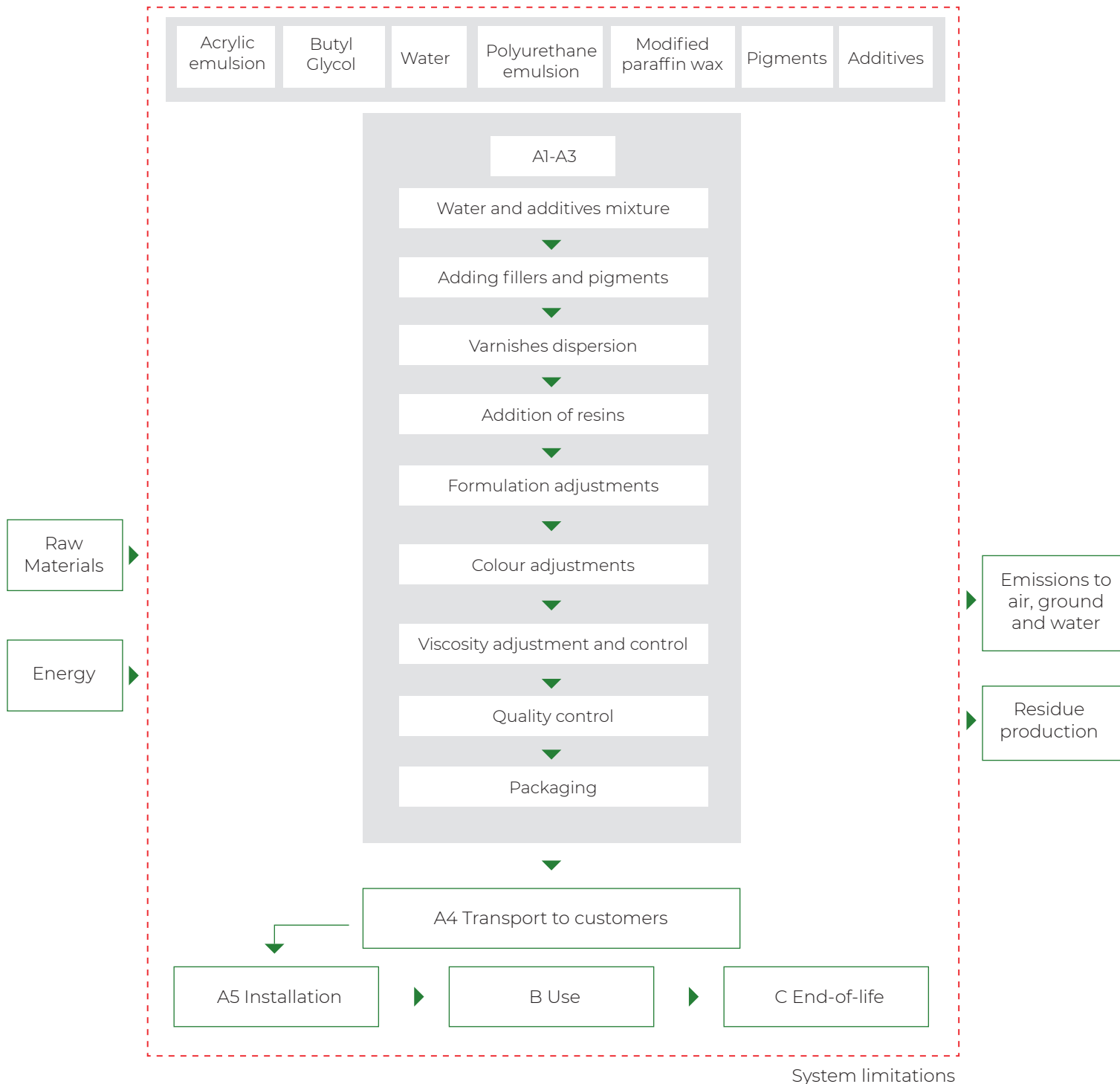
A Life Cycle Analysis (LCA) is a list of all the positive and negative impacts of a product on the environment. In the case of JUNO Paints, these impacts are measured at each stage of the product's life "from Cradle to Grave".

That is, from the extraction of raw materials to the destruction of the end product. The analysis must consider all phases of the life cycle of materials: production, transport, use and recycling.

ENAMELS DIAGRAM:



VARNISHES DIAGRAM:



## WHY CERTIFY PRODUCTS THROUGH **EPD**?

**01**

Provides **transparency** and **credibility** in customer communication. It is a type of information that is increasingly demanded by consumers, who demand credible information that allows them to compare similar products.

**02**

It adds **value to the product** and strengthens the credibility of the product and company.

**03**

Allows **anticipation** of future **legal requirements**.

**04**

Product environmental declarations allow **point-scoring in sustainable building certifications** such as **BREEAM** and **LEED**.



## PRESCRIBE JUNO: CHOOSE CERTIFIED QUALITY PAINTS

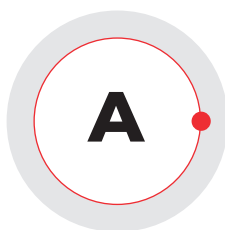
JUNO paints extends its certified product ranges by obtaining the EPD “Cradle to Grave” certification for its enamel and varnish ranges, which contributes to obtaining the LEED and BREEAM sustainable building certificates.

These new ranges join the list of certifications obtained in January 2020 for all its indoor and outdoor water-based products. Thus allowing JUNO to become the first paint manufacturer to obtain the EPD-DAP for its entire range of indoor and outdoor water-based products, as well as its

full range of enamels and varnishes, representing almost 80% of its current General Product Catalogue offering.

The EPD of JUNO products have been certified according to the ENVIRONDEC criteria, and are published on their website; [www.environdec.com](http://www.environdec.com), for worldwide consultation and access.

### WHICH PRODUCTS HAVE BEEN CERTIFIED?



#### ENAMELS

(15 PRODUCTS)

**Junolac antioxidante:** Quick-drying antioxidant synthetic self-priming enamel.

**Junolac:** High-solid synthetic enamel paint with great durability.

**Junoplus:** Synthetic alkyd-based enamel with wide range of colours.

**Oxiforja:** Synthetic enamel with a unique forged iron metallic finish effect and antioxidant properties.

**Aqualac:** Water-based multisurface enamel, with low odour and easy-application properties.

**Waterplus:** Single pack water-based polyurethane coating for impeccable finishes.

**Junomalte:** Synthetic enamel for Junomatic tinting system. Wide range of colours.

**Junorapid:** Synthetic enamel for Junomatic industrial tintometric system. Quick drying.

**Junopoxi:** 2-component epoxy enamel for Junomatic industrial tintometric system. High chemical resistance.

**Junoretano:** 2-component polyurethane enamel for Junomatic industrial tintometric system. Great weather resistance.

**Junosol:** Easy to apply and quick-dry water-based one component floor paint.

**Dynamol:** Quick-drying chlorinated rubber paint with high resistance to acids.



## PRESCRIBE JUNO: CHOOSE CERTIFIED QUALITY PAINTS

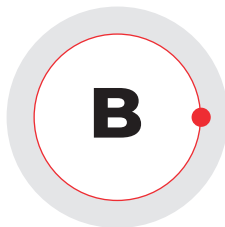


### ENAMELS

**Pavimyc:** Two-pack epoxy floor paint with excellent hardness and adhesion properties.

**Dynapok:** Certified hygiene epoxy coating. Ideal for spaces with reduced access to ventilation.

**Aquapur:** Two-pack water-based polyurethane coating with excellent hardness and resistance.



### VARNISHES

(8 PRODUCTS)

**Lasur acuoso:** Water-based woodstain with water-repellent properties. Open pore protector with UV filters and anti-fungicidal protection.

**Barniz acuoso:** Special odourless water-based polyurethane varnish for parquet.

**Aquadur:** Special water-based acrylic varnish for carpentry. Great hardness and chemical resistance.

**Junolac:** Synthetic clear varnish with UV filters. Highlights wood's natural tones.

**Junotinte:** Synthetic coloured varnish with UV filters. For colourful and decorative finish.

**Junodur:** Special synthetic polyurethane varnish for parquet. Hardness and resistance to domestic use.

**Barniz Yates:** Synthetic high build full gloss varnish with UV filters. Special for harsh weather conditions.

**Antigraffiti:** Two-pack clear aliphatic polyurethane gloss coating.

For more information,  
consult JUNO's technical department at:  
[prescription@juno.es](mailto:prescription@juno.es)

# JUNO

PAINT MANUFACTURERS SINCE 1927

Barrio Saconi, 10 - 48950 Erandio (Vizcaya) - Spain

Tfno.: +34 944 670 062 - Fax: +34 944 675 832

[export@juno.es](mailto:export@juno.es)

[www.junopaints.com](http://www.junopaints.com)

JUNOEPDV1 0121



 @PinturasJUNO

 junointernational

 Pinturas JUNO



[www.junopaints.com](http://www.junopaints.com)